

THE DIXIE CHOPPER DIFFERENCE

THE XCALIBER DIFFERENCE

OUR HISTORY

OUR PHILOSOPHY

WARRANTY

ACCESSORIES

QUICK SPECS



2024 PRODUCT LINEUP



DIXIE CHOPPER® The World's Fastest Lawn Mower.

	Model Number	Engine	42" Deck	48" Deck	50" Deck	54" Deck	60" Deck	66" Deck	72" Deck	74" Deck
Residential	2342KW	23hp Kawasaki FR	•							
	2348KW			•						
	2354KW									
	2448KW	24hp Kawasaki FR		•						
Commercial	2454KW	24hp Kawasaki FT								
	2448KW			•						
	2454KW									
	2460KW	23.5hp Kawasaki FX								
Industrial	2448KW	27hp Kawasaki FX		•						
	2454KW									
	2460KW									
	2754KW	35hp Kawasaki FX								
Classic	2760KW	40hp Vanguard® Big Block EFI								
	3560KW									
	4060VGE									
	3572KW	35hp Kawasaki FX								
XCALIBER	4072VGE	40hp Vanguard® Big Block EFI								
	2760KW									
	3560KW									
	4060VGE	40hp Vanguard® Big Block EFI								
XCALIBER	3574KW	35hp Kawasaki FX								
	4074VGE									

REV 10022023
NOTE: Specifications, while correct at time of printing, may change without notice. Engine horsepower is provided by engine manufacturer. Actual operating power output may vary due to conditions of specific use.

Optional Accessories
Get more value and productivity with optional accessories for your mower. Add an OCDC to take control of your clippings, springer forks for a smoother ride, or a striping kit for stadium worthy stripes.



TURF BOSS® TIRES



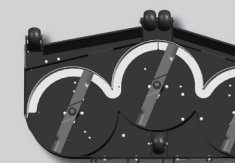
OCDC OPERATOR CONTROLLED DISCHARGE CHUTE



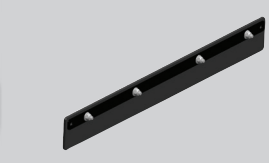
SUSPENSION SEAT



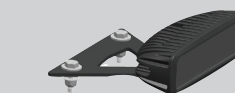
SPRINGER FORKS



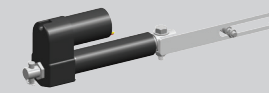
MULCH KIT



STRIPING KIT



LIGHT KIT



ELECTRIC DECK LIFT

The Best Warranties in the Industry!

BUMPER-TO-BUMPER WARRANTIES*

3-Year NO HOUR LIMIT* Bumper-to-Bumper Limited Warranty*

EXTENDED DRIVETRAIN WARRANTY*

5-Year 3,000 Hour Drivetrain Warranty*

*Talon R/C and Talon M/S excluded
†Covers pumps, wheel motors, and T-box only
‡Limited warranty does not include wear items



HOMETOWN HEROES

Dixie Chopper honors our Hometown Heroes with a rebate up to \$200.

If you are active-duty, retired, or veteran member of the U.S. Military, Police, Fire, or First Responder services, you can save up to \$200 when you purchase a new Dixie Chopper lawn mower.

Visit your local Dixie Chopper dealer or www.dixiechopper.com to learn more!

DIXIE CHOPPER® The World's Fastest Lawn Mower.

Our Founder Art Evans built the very first Dixie Chopper in 1980. Since then, all Dixie Chopper mowers are built with the **highest quality craftsmanship** for maximum durability. And since joining The Alamo Group as part of RhinoAg, we are backed by **decades of turf maintenance excellence** and continue to build cutting edge and diverse products to fit every customer's need.

At Dixie Chopper, we take pride in our **history of innovative ideas** and the legacy of our American-made products. Regardless of the model you choose, every product we make is built to provide the **speed, power, and performance you need** to get the job done. Our unique features, patented inventions, diverse product line, and lifetime warranties are the "Dixie Chopper Difference."

To see more of our history or to find a dealer near you, visit www.dixiechopper.com.



DIXIE CHOPPER
"Magnum 5018"
#0001



WIND TUNNEL
The **X2** "Wind Tunnel" maximizes vacuum and discharge to produce an unmatched quality cut.



- BEST CUTTING DECK IN THE INDUSTRY!**
- Deep Wind Tunnel
 - 7 Gauge Steel Shell
 - X-Blade Technology
 - 7 Gauge Top Plate
 - 2" Blade Overlap
 - Formed & Welded
 - Dual-Blade Capable
 - Adjustable Baffles
 - Heavy-duty Spindles
 - 1/4" Rub Plate
 - Cooling Fans
 - High Blade Tip Speed

LONGER LASTING PARTS
The key to extended spindle and belt life is keeping them both cool during operation. Dixie Chopper combines ductile iron-housed spindles, cooling fans, and deep grooved pulleys with machined holes on the XCaliber® **X2** deck. These features keep the deck clean and lower belt and spindle temperatures for maximum life.



* Also featured on other models.



OPERATOR COMFORT
Springer Forks absorb bumps and imperfections in the ground. However, when combined with a **suspension seat**, the result is the smoothest ride possible.



X-BLADE TECHNOLOGY
X-Blade technology allows the operator to add a Twist Blade for high moisture mulching if desired. Made with the highest Rockwell hardness of any blade in the industry, X-Blades stay sharper longer to ensure the best cut possible.



PROTECTION STANDARD
Only Dixie Chopper combines **Turbinator pre-cleaners** to extend engine life, **spindle fans** to extend spindle and belt life, and additional **hydraulic oil coolers** to extend the life of the drive system.



OCDC
The **OCDC** (Operator Controlled Discharge Chute) comes standard on select models and allows the operator to manually open and close the discharge side of the deck to prevent objects from being thrown by the blades.



TURF BOSS® TIRES
Turf Boss® tires can be used on most commercial and industrial models* and provide superior traction in all mowing situations. Turf Boss® tires were created by Dixie Chopper when founder Art Evans sought to develop a tire pattern for better traction without damaging turf.



BUILT STRONGER
The **6-rail frame** featured on our industrial mowers is the strongest in the industry and backed with a lifetime warranty against breakage. No one manufactures a frame with more durability or strength than Dixie Chopper.

OUR LIFETIME WARRANTIES

- LIFETIME** on Frame Materials and Workmanship¹
- LIFETIME** on Steering Linkages and Levers²
- LIFETIME** on Front Forks³
- LIFETIME** on Front Caster Bearings³

Dixie Chopper offers more commercial **Lifetime Warranties**¹ than any other zero-turn mower manufacturer. Doing so, Dixie Chopper stands behind its products 100% to provide the longest lasting products to our dealers and their customers.

¹ Most Lifetime Warranties apply to all models with exceptions
² Frame warranty does not apply to residential or Talon models
³ Lifetime warranty against breakage

* Not available on all models. See dealer for details.

ZEE 2™**ZEE 2 HP™****BLACKHAWK™****BLACKHAWK HP™****EAGLE****EAGLE HP™****CLASSIC™****XCALIBER™****TALON R/C****TALON M/S**
**3 YEAR
BUMPER-TO-BUMPER
WARRANTY***

**3 YEAR
BUMPER-TO-BUMPER
WARRANTY***

**3 YEAR
BUMPER-TO-BUMPER
WARRANTY***

**3 YEAR
BUMPER-TO-BUMPER
WARRANTY***

**3 YEAR
BUMPER-TO-BUMPER
WARRANTY***

**3 YEAR
BUMPER-TO-BUMPER
WARRANTY***

**3 YEAR
BUMPER-TO-BUMPER
WARRANTY**
**5 YEAR
3,000 HOUR
DRIVETRAIN
WARRANTY****

**3 YEAR
BUMPER-TO-BUMPER
WARRANTY**
**5 YEAR
3,000 HOUR
DRIVETRAIN
WARRANTY****

**1 YEAR
BUMPER-TO-BUMPER
WARRANTY**

**1 YEAR
BUMPER-TO-BUMPER
WARRANTY**

THE MOWER WITH MORE MUSCLE FOR YOUR MONEY.

	42" Deck	48" Deck	54" Deck
Model	2342KW	2348KW	2354KW
Engine			
Manufacturer	Kawasaki FR		
Horsepower	23		

Drive System			
Transmissions	Hydro-Gear® ZT-2800		
Ground speed	7 mph		

Mower Deck			
Deck size	42"	48"	54"
Acres/hour	2.4	2.7	3.1
Cut height	1.5" - 4.5"		
OCDC (operator controlled discharge chute)	Optional		

General	
Fuel capacity	4 gallons
Seat	Deluxe seat w/ armrest

*Unlimited hour residential limited warranty, see dealer for complete details.

REDEFINING THE RESIDENTIAL MOWER.

	48" Deck	54" Deck
Model	2448KW	2454KW
Engine		
Manufacturer	Kawasaki FR	
Horsepower	24	

Drive System	
Transmissions	Hydro-Gear® ZT-3100
Ground speed	8 mph

Mower Deck		
Deck size	48"	54"
Acres/hour	3.1	3.4
Cut height	1.5" - 4.5"	
OCDC (operator controlled discharge chute)	Standard	

General	
Fuel capacity	4 gallons
Seat	Deluxe seat w/ armrest

*Unlimited hour residential limited warranty, see dealer for complete details.

THE SMOOTHEST DRIVING MOWER ON THE MARKET.

	48" Deck	54" Deck	60" Deck
Model	2448KW	2454KW	2460KW
Engine			
Manufacturer	Kawasaki FT		
Horsepower	24		

Drive System			
Transmissions	Parker® HTE		
Ground speed	9 mph		

Mower Deck			
Deck size	48"	54"	60"
Acres/hour	3.4	3.9	4.3
Cutting height	1" - 5"		
OCDC (operator controlled discharge chute)	Optional		

General			
Fuel capacity	7 gallons		
Seat	Deluxe seat w/ armrest		
Springer forks	Optional		

*Unlimited hour limited warranty, see dealer for complete details.

WHERE COMMERCIAL MEETS COMFORTABLE.

	48" Deck	54" Deck	60" Deck
Model	2448KW	2454KW	2460KW
Engine			
Manufacturer	Kawasaki FX		
Horsepower	23.5		

Drive System			
Transmissions	Parker® HTJ		
Ground speed	10 mph		

Mower Deck			
Deck size	48"	54"	60"
Acres/hour	3.8	4.3	4.8
Cutting height	1" - 5"		
OCDC (operator controlled discharge chute)	Optional		

General			
Fuel capacity	7 gallons		
Seat	Suspension w/ armrest and isolated platform		
Springer forks	Optional		

*Unlimited hour limited warranty, see dealer for complete details.

LADIES AND GENTLEMEN, THE EAGLE HAS LANDED.

	54" Deck	60" Deck
Model	2754KW	2760KW
Engine		
Manufacturer	Kawasaki FX	
Horsepower	27	

Drive System	
Transmissions	Hydro-Gear® ZT-5400 (16cc)
Ground speed	12 mph

Mower Deck		
Deck size	54"	60"
Acres/hour	5.2	5.8
Cutting height	1" - 5"	
OCDC (operator controlled discharge chute)	Optional	

General	
Fuel capacity	8 gallons
Seat	Suspension w/ armrest and isolated platform
Springer forks	Optional

*Unlimited hour limited warranty, see dealer for complete details.

TAKE FLIGHT ON OUR FASTEST FLYING EAGLE.

	60" Deck	72" Deck
Model	3560KW	4072VGE
Engine		
Manufacturer	Kawasaki FX	Vanguard® EFI
Horsepower	35	40

Drive System	
Transmissions	Hydro-Gear® ZT-5400 (16cc)
Ground speed	14 mph

Mower Deck		
Deck size	60"	72"
Acres/hour	6.7	8.1
Cutting height	1" - 5"	
OCDC (operator controlled discharge chute)	Optional	

General	
Fuel capacity	10 gallons
Seat	High-back suspension w/ padded armrest, lumbar, recline, and isolated platform
Springer forks	Standard

*Unlimited hour limited warranty, see dealer for complete details.

A TRUE CLASSIC AMERICAN WORKHORSE.

	60" Deck	72" Deck
Model	2760KW	4072VGE
Engine		
Manufacturer	Kawasaki FX	Vanguard® EFI
Horsepower	27	40

Drive System	
Pumps	Hydro-Gear® 16cc
Wheel motors	Parker® DG280
Ground speed	12 mph

Mower Deck		
Deck size	60"	72"
Acres/hour	5.8	7
Cutting height	1.25" - 5"	
OCDC (operator controlled discharge chute)	Standard	

General		
Fuel capacity	8 gallons	10 gallons
Seat	Suspension w/ armrest	
Springer forks	Optional	

*Unlimited hour limited warranty, see dealer for complete details.
** Drivetrain warranty includes pumps, wheel motors, and t-box, see dealer for details

THE TOUGHEST MOWER IN THE ZERO-TURN INDUSTRY.

	66" Deck	74" Deck
Model	3566KW	4074VGE
Engine		
Manufacturer	Kawasaki FX	Vanguard® EFI
Horsepower	35	40

Drive System	
Pumps	Hydro-Gear® 21cc
Wheel motors	Parker® DG335
Ground speed	13 mph

Mower Deck		
Deck size	66"	74"
Acres/hour	6.9	7.8
Cutting height	1.25" - 5"	
OCDC (operator controlled discharge chute)	Standard	

General	
Fuel capacity	12 gallons
Seat	High-back suspension w/ padded armrest, lumbar, and recline
Springer forks	Standard

*Unlimited hour limited warranty, see dealer for complete details.
** Drivetrain warranty includes pumps, wheel motors, and t-box, see dealer for details

MOW WHERE NO MOWER HAS MOWED BEFORE.

	Remote-Control Slope Mower	
Model	2844VGE	
Engine		
Manufacturer	Vanguard® EFI	
Horsepower	28	

Drive System	
Drive motors	48V AC electric motor to final reduction
Ground speed	5 mph

Mower Deck	
Deck size	44"
Cutting height	1" - 6"
Discharge	Rear discharge

Remote Controls	
Working Range	492'
Controller	Proportional joysticks w/ 2 rechargeable batteries

*Unlimited hour limited warranty, see dealer for complete details.
** 1,500 hour limited warranty, see dealer for complete details.

MEET THE HARDEST WORKER ON THE JOB SITE.

	Mini-Skid Steer	
Model	700HPX	
Engine		
Manufacturer	Kubota	
Horsepower	24.8	

Hydraulic System	
Hydraulic Capacity	24 gallons
Hydraulic Flow Aux	11.3 (high) / 8.7 (low) gpm
System Pressure	3000 psi

Tracks	
Track Width	9"
Track Speed	4.5 mph
Ground Pressure	4.21 psi

General	
Weight (no attachment)	2880 lbs
Length (no attachment)	77"
Width	34.5" (retracted) / 43.5" (extended)
Tip Capacity	2020 lbs
Operating Capacity	707 lbs
Ground Clearance	5"

*Unlimited hour limited warranty, see dealer for complete details.